



Company History

Buffalo Computer Graphics is a global provider of Geographic Information Systems (GIS), Incident Management and Mass Notification solutions, as well as training simulation systems, and custom engineered products for a variety of industries. A veteran-owned U.S. Small Business, BCG has provided its private sector and government customers with superior products and outstanding service for over twenty-five years. The ability to provide unique, custom-tailored solutions, as well as products that can integrate with an organization's existing infrastructure is what sets BCG apart from its competitors.

GIS Software & Services

Custom GIS Software Development

- Custom Web Applications
- Spatial Data Management
- Mobile Applications

GIS Infrastructure Planning & Development

- GIS Infrastructures Design
- GIS Services Development
- Needs Assessment & Implementation Planning

Clients

BCG has been responsible for the design and development of custom hardware and software applications for customers including the New York State Department of Health, the New York State Emergency Management Office, the New York State National Guard, the Minnesota Department of Homeland Security, the Vermont Department of Emergency Management, Guam's Department of Homeland Security, Niagara Region Canada and the counties of Erie, Niagara, Chautauqua, Westchester and Orange County New York.

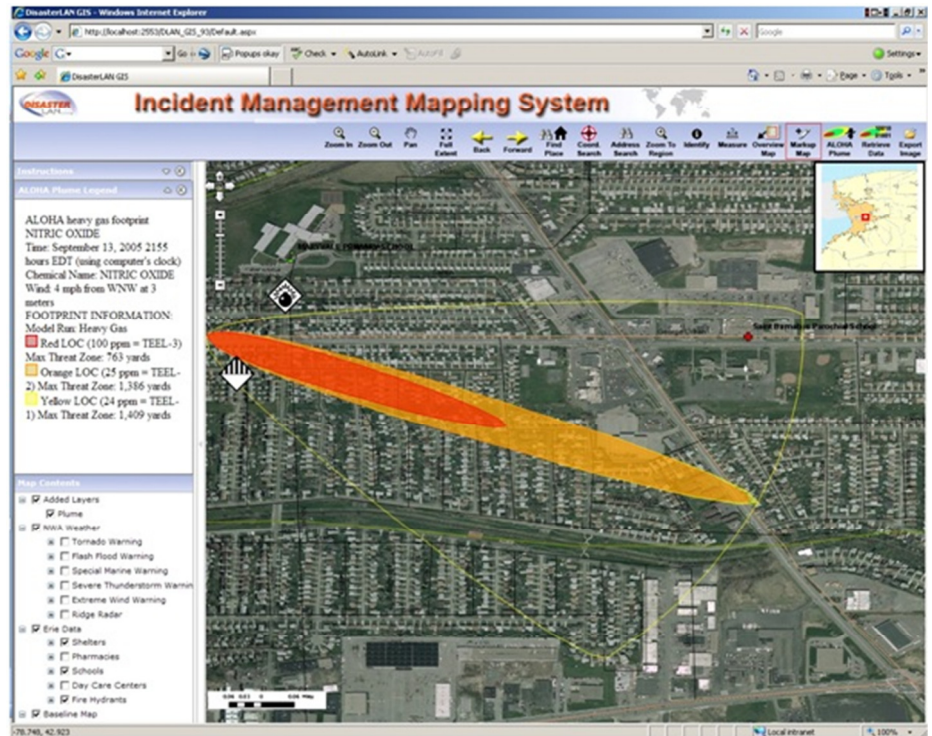
Support

In addition to working closely with our customers to determine their exact needs, BCG prides itself on the ability to provide quick and expert support for all installed systems. This includes immediate phone support, on-site assistance, and both formal and informal training classes for all of our products.

Recent Awards

Buffalo Computer Graphics has been awarded the 2010 ESRI Business Partner of the Year for the Northeastern region.

Buffalo Computer Graphics (BCG) proudly offers a Geographic Information System (GIS) Module for the web base DisasterLAN™ Incident Management System.



The DisasterLAN™ GIS Module utilizes real time situational information that is directly input in the DisasterLAN™ system, such as the location of requests, resources and situational reports it is monitoring. It then geocodes the data and displays it on a map based on the results of an easy to use query generator.

Advanced GIS mapping functionality includes buffering tools, plume importation and analysis and search and navigation tools that can display data by the feature, coordinate, address, or municipality. The application also provides advanced printing capabilities, comprehensive map and data export tools, map markup tools, and real time auto vehicle location (AVL) and asset tracking functions.

The GIS Module is currently in use by the following organizations: Erie County Emergency Services, The State Emergency Management Office of New York, Vermont Emergency Management, State of Minnesota Division of Homeland Security & Emergency Management, Guam Civil Defense, Chautauqua, Niagara and Westchester Counties in New York and Niagara Region Canada.

BCG developers are trained in the most state of the art software. The DisasterLAN™ GIS Module was developed utilizing ESRI ADF Framework, ESRI ArcGIS Server 9.3.1, Microsoft .NET Framework 3.0.

