

Erie-Niagara Framework

Custom Web Application

Company History

Buffalo Computer Graphics is a global provider of Geographic Information Systems (GIS), Incident Management and Mass Notification solutions, as well as training simulation systems, and custom engineered products for a variety of industries. A veteran-owned U.S. Small Business, BCG has provided its private sector and government customers with superior products and outstanding service for over twenty-five years. The ability to provide unique, custom-tailored solutions, as well as products that can integrate with an organization's existing infrastructure is what sets BCG apart from its competitors.

GIS Software & Services

Custom GIS Software Development

- Custom Web Applications
- Spatial Data Management
- Mobile Applications

GIS Infrastructure Planning & Development

- GIS Infrastructures Design
- GIS Services Development
- Needs Assessment & Implementation Planning

Clients

BCG has been responsible for the design and development of custom hardware and software applications for customers including the New York State Department of Health, the New York State Emergency Management Office, the New York State National Guard, the Minnesota Department of Homeland Security, the Vermont Department of Emergency Management, Guam's Department of Homeland Security, Niagara Region Canada and the counties of Erie, Niagara, Chautauqua, Westchester and Orange County New York.

Support

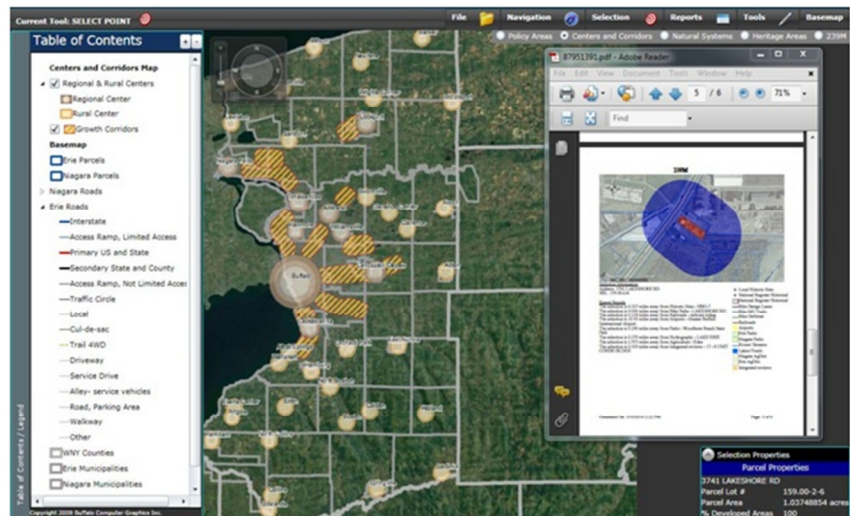
In addition to working closely with our customers to determine their exact needs, BCG prides itself on the ability to provide quick and expert support for all installed systems. This includes immediate phone support, on-site assistance, and both formal and informal training classes for all of our products.

Recent Awards

Buffalo Computer Graphics has been awarded the 2010 ESRI Business Partner of the Year for the Northeastern region.

On October 2006 Erie and Niagara Counties of New York State completed a joint project titled the Framework for Regional Growth. This resulted in a document that held the developmental vision of both counties for the next fifteen years. This document contains a variety of maps including planning policy areas, centers and growth corridors, natural systems, and heritage assets. Each of these maps included essential data for the planning boards of both counties.

In 2009, Buffalo Computer Graphics (BCG) was contracted to develop an easy to use **Custom Web Application** that could leverage the Framework's mapping data and the power of a Geographic Information System.



This application's purpose is to assist planners and the general public in making developmental and land use decisions. The Framework GIS Application contained a variety of tools to find a point or parcel of interest, including address searches, SBL search, coordinate input, or just clicking on the map interface. Once a point or parcel becomes selected the user may run a variety of reports, giving them such information as the percentage of a parcel included in a policy area or growth corridor, the distance from the nearest natural system such as a wetland or river, and if it intersects with a flood plain or a steep slope. Additionally, Buffalo Computer Graphics delivered the capacity to process additional data sources to check compliance with NY State Code 239-M. Additional tools were included in the application including the ability to save your work, draw and add text to the map and printed reports, measure distances and areas, search the map, identify features, toggle map layers, and switch base maps.

The Erie-Niagara Framework was developed utilizing ESRI ArcGIS Server 9.3.1, ESRI Silverlight API, ESRI ArcSDE and Microsoft .NET Framework 3.5.

