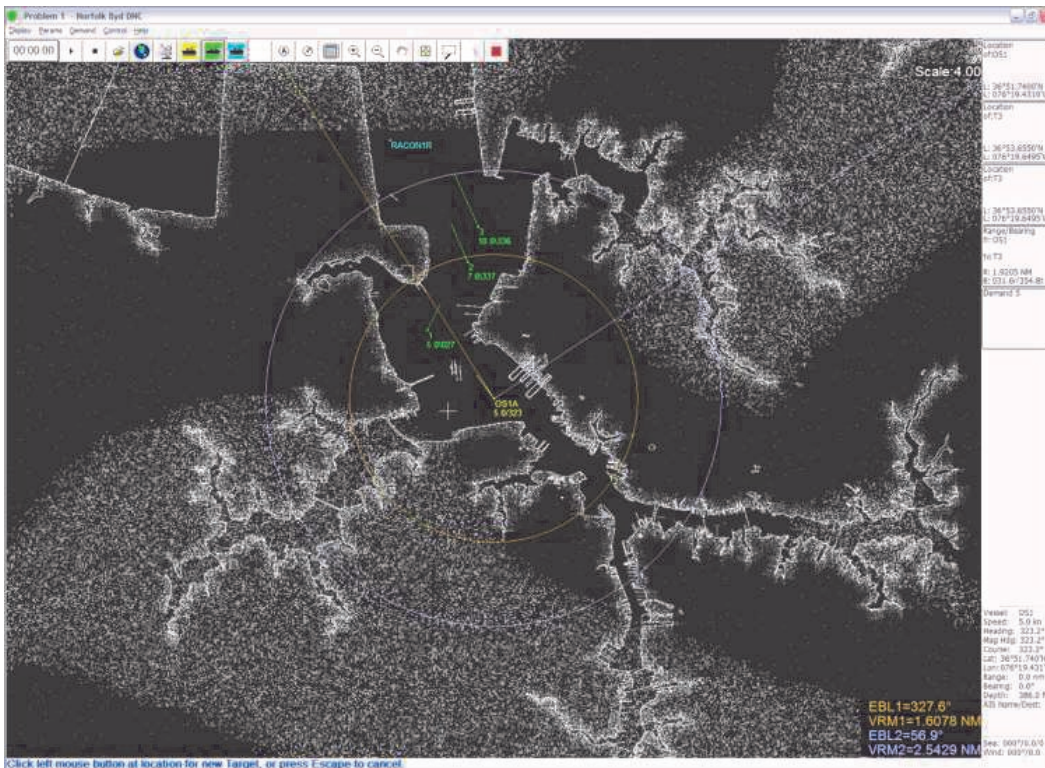


Enhanced Graphical User Interface (GUI2)



Features

- > Control of up to 16 Ownships
- > Control of at least 100 targets
- > Programmable Characteristics and Dimensions of all Vessels
- > Graphics Window with overview of exercise area
- > Easy to use Toolbar for common tasks
- > Zoom, Pan & Centering Tools
- > Save, Edit, Replay, & Review capability for scenarios



Control of Buffalo Computer Graphics' (BCG) radar simulation is through our instructor software called the Enhanced Graphical User Interface (GUI2). The GUI2 is compatible with BCG's entire family of radar simulators and provides full control over all elements in the training exercise.

The GUI2 utilizes BCG's 30 years of experience in maritime simulation to provide the user with an easy to use and incredibly thorough interface for controlling a training scenario. The GUI2 can control up to 16 Ownships and at least 100 moving or stationary targets. In addition to controlling the Ownships and targets, the GUI2 allows control of: environmental conditions, radar parameters, vessel handling characteristics, scenario timeline, and geographic location for all entities.

The GUI2 is available as a software-only package installed on a customer's PC, or as a 'turn-key' package with the software installed and tested on a BCG provided Windows computer prior to delivery.

Available Options:

- ◆ Automatic Identification System (AIS) Interface
- ◆ Expanded Target Capacity
- ◆ Slave Operation for remote control of radar operation
- ◆ Can be used as a Tactical or Situation display
- ◆ Learning Management System (LMS)
- ◆ Supports VHF Radio Control

Environmental Parameters Window

Help...

Prob	Control	Sea Set/Drift	Wind Dir/Speed	Precip On	Precip Pattern	Precip Latitude/Longitude	Precip Intensity	Sea State
1	Scenario	000 0.0	000 0.0	<input type="checkbox"/>	* no precipitation	L33.36.5508,N L118.19.5138,W	7	0

OK Cancel Enter Refresh Graph Cloud Loc

Ownship Maneuvering Window

Help...

330 000 030
300 060
270 090
240 120
210 150 180

Current Heading: 162.14
Last Cmd Heading: 158.00

Heading Mode
 Immediate
 Commanded
 Port
 Starboard

Ahead: 20.0 kn.
Current Speed: 4.2
Last Cmd Speed: 4.2
Astern: 5.0 kn.

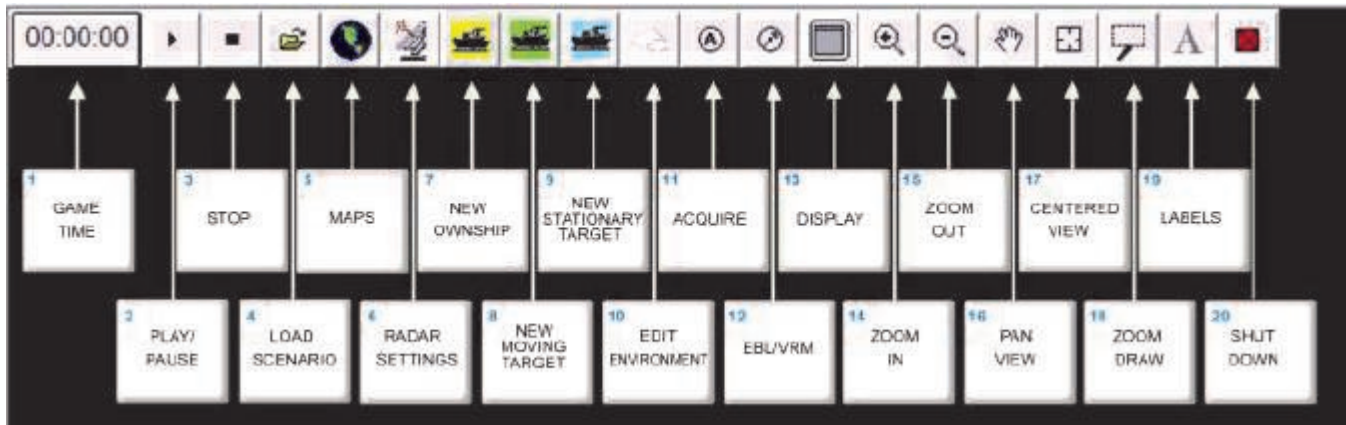
Speed Mode
 Immediate
 Commanded

OK Cancel Enter Refresh Advanced AIS

Class Table Parameters

Class Name	Rudder Delay/Acl secs/secs	Speed Delay/Acl/Dcl secs/secs/secs	Spd Turb Loss %	Max Speed Ahd/Ast kn./kn.	Max Turn Rate DPM	Size Len / Wid / Hgt ft. / ft. / ft.	Draft ft.	Effect Sea/Wind %	Max RPM Ahd Ast

Enhanced Graphical User Interface (GUI2) Toolbar



Contact BCG for information and pricing on our full line of Maritime Simulation products.

GUI2 Features:

The GUI2 allows the operator to control or modify the following elements in any given scenario:

- * Ownship speed, heading, location, and other parameters for up to 16 Ownships
- * Target ship speed, heading, location, and other parameters for at least 100 target ships
- * Radar type selection
- * Vessel parameters including: dimensions, rudder response time, acceleration and deceleration rates, max turn rate, and other handling characteristics.
- * Unlimited scenarios
- * Environmental conditions including: wind direction and speed, sea state, precipitation level and intensity, and set and drift.
- * Dual VRMs and EBLs
- * Five customizable demand windows including details such as CPA/TCPA, Position, Range/Bearing, and Bow Crossing Range/Time for all active Ownships and targets
- * Simulation of equipment causalities