

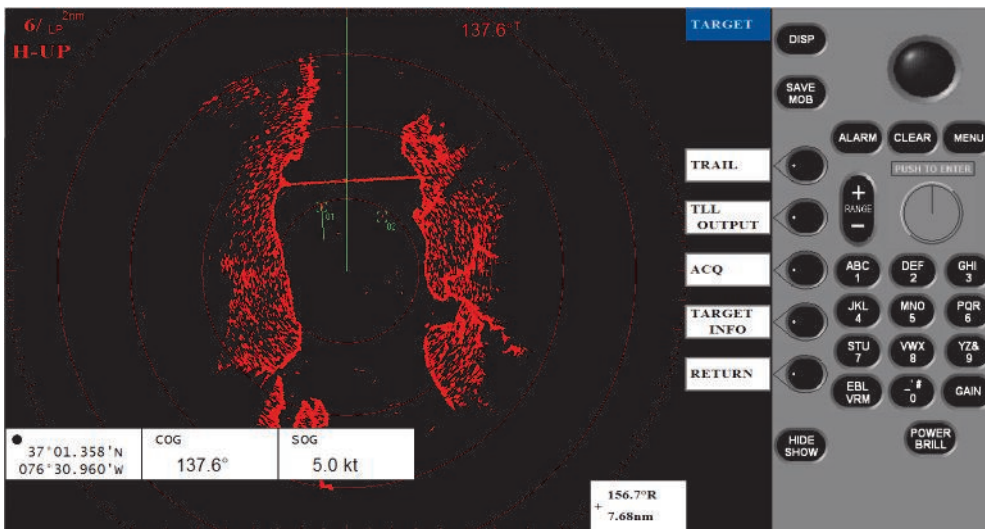
# PCRDP

## Radar Emulator



### Features

- > Windows-based radar emulation software
- > Simulates user interface of Furuno RDP-149 (including ARPA)
- > Realistic 3D radar imagery
- > Full radar graphics support
- > User interface operates from trackball or touch monitor

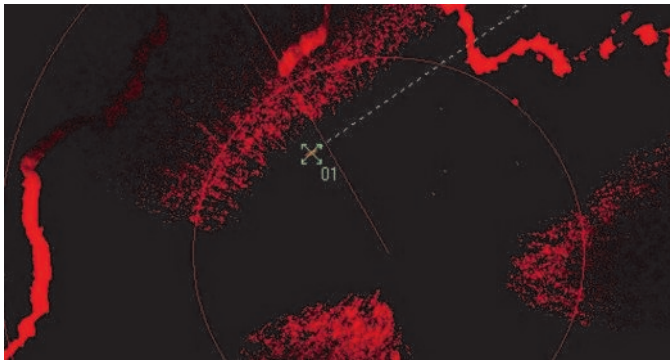
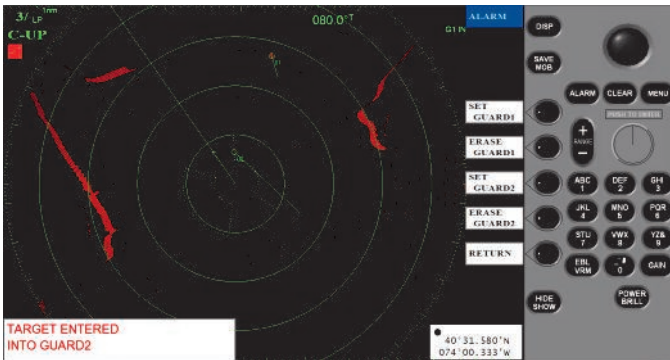
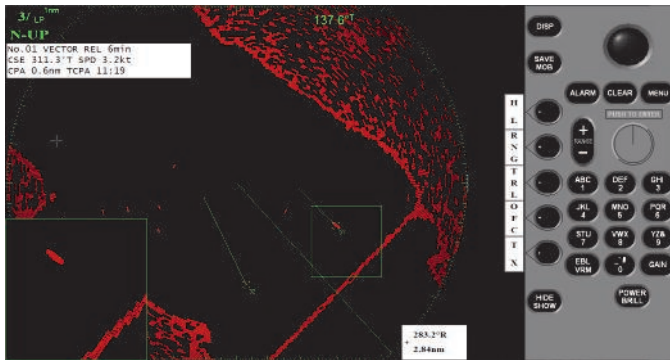
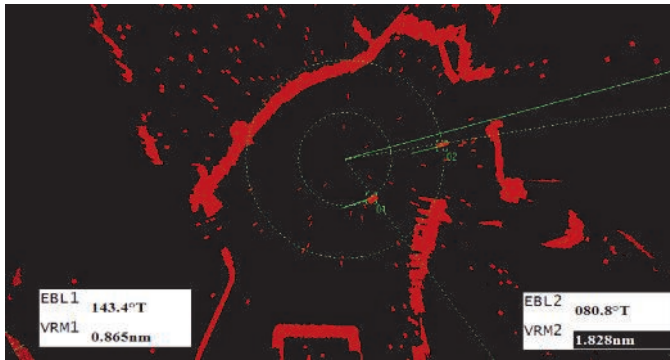


BCG offers a radar emulation product to support small boat navigation training requirements. Based upon the Furuno RDP-149 radar display unit (Furuno's 1800C/1900C radar series), the **PCRDP** provides a realistic 3D radar image within a user interface modeled upon the Furuno small boat radar package. Using BCG's established radar simulation engine, the PCRDP offers the same operator controls and mimics the menu structure of the real Furuno radar. Control of the radar simulation is provided through BCG's Enhanced Graphical User Interface (GUI2) or through a Remote Network Interface such as BCGUDP, DIS or HLA.

### Low-cost alternative to real radar training

Training which utilizes standard desktop PCs running Windows software is an economical path for many training facilities. PCRDP is offered as a pre-installed 'turn-key' radar trainer including all computer hardware and software; or may be purchased as software-only ready to install and License on your own computers. Multiple PCRDP stations can be networked together in a classroom setting. Each student may be configured to operate as a single radar platform (all students see the same radar image) or as independent radar platforms (students can see each other on the radar) operating in a common training environment. With both configurations, the student maintains independent control of his or her radar display and the operating settings. As with all BCG simulators, the instructor has full control of the simulated radar environment and what the student experiences.

## SAMPLE RADAR IMAGES



## PCRPD Features

The PCRPD supports the primary operating features and modes of the real radar display. These include:

- Range and Presentation Mode Selection
- VRM/EBL (2)
- Offsets
- Cursor Control
- Display of Sensor Data Boxes
- Gain, FTC, STC
- Color Selections
- Target Acquisition with TLL NMEA output
- Alarms
- Display Graphics for Vectors & Trails
- AIS

The sizable window used by PCRPD allows the user to set the screen image proportional to the monitor being used. This offers the convenience of custom operation on wide screen monitors and touch panels.

The PCRPD simulator operates as per Furuno's User Manual allowing for realistic training for radar navigation and to learn detailed device operation.

Scenario control is provided through BCG's Enhanced Graphical User Interface (GUI2) supporting a complete set of training capabilities, as well as ship sensor simulation in the form of NMEA-0183 messaging.

### PC Requirements:

- ◆ Windows XP or WIN7
- ◆ Multi-core processor, >2GHz
- ◆ 2GB memory
- ◆ 500MB disk
- ◆ 100/1000 NIC
- ◆ USB for Trackball or mouse

BCG also offers PC-based radar emulation of Raytheon's SPS-73 (PCRadAr) and Sperry Marine's BridgeMaster-E (PCBME) radar displays. These two emulators provide the same level of radar fidelity as the PCRPD, as well as the full ARPA capabilities found with these two bridge radars.

Contact BCG for information and pricing on our full line of Maritime Simulation products.