

PCS-200

Radar Simulator

Buffalo Computer Graphics, Inc. (BCG) continues its excellence in the radar simulation arena with the PCS-200 Radar Simulator.

Supporting an expanded list of features from its predecessor the PCS-100, PCS-200 offers a higher level of hardware integration and more emphasis on software generated radar imagery. Added features include an extended radar sweep length and the use of true 3D models for radar occultation. The heart of the PCS-200 is BCG's Radar Signal Generator (RSG) Board. This single slot PCI format module allows BCG more flexibility for packaging the PCS-200, such as a 1U rackmount chassis or an ultra small portable unit. The reduced parts count of the PCS-200 increases system reliability while reducing the cost of maintenance spares. The PCS-200 delivers a full range of antenna signals and a realistic radar presentation for a wide variety of radar displays. The PCS-200 offers this with accuracy, realism and a price to performance ratio that is unmatched.



The PCS-200 may also be integrated with ECDIS or commercial electronic charting systems. To enhance the training experience, BCG offers a mechanical steering console or virtual steering control to allow the student mariner direct control of the Ownship in a training classroom. As with all BCG PCS simulators, multiple units may be networked together to allow students to operate in an interactive team training environment. The PCS-200 remains compatible with BCG systems integrated with bridge visual trainers.

The PCS-200 is also available as a hardware / software kit installed in a customer's computer (model PCS-201) or as a small portable system (model PCS-250) when size and transportability are required. Each model offers the same fidelity and functionality to the user. Contact BCG for more information on the PCS-200, 201, or 250.

Features

- ◆ Controlled through BCG's Enhanced Graphic User Interface (GUI2)
- ◆ Network Interface for Third Party Control
- ◆ 3D Radar Imagery
- ◆ STCW and IMO Compliant simulation

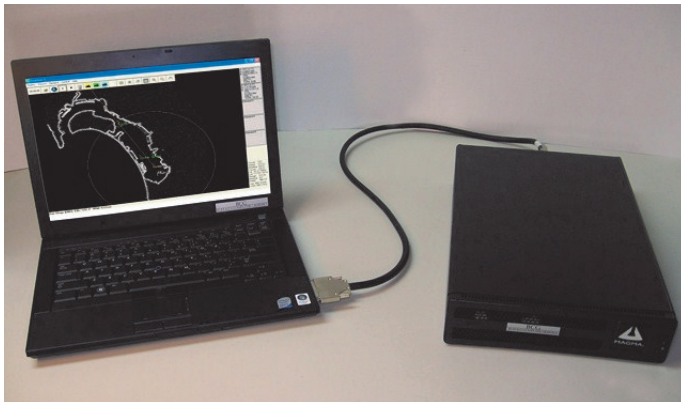
Available Options

- ◆ Automatic Identification System (AIS) Interface
- ◆ Expanded Target Capacity
- ◆ Student Control of Ownship
- ◆ Multiple Package Types Available

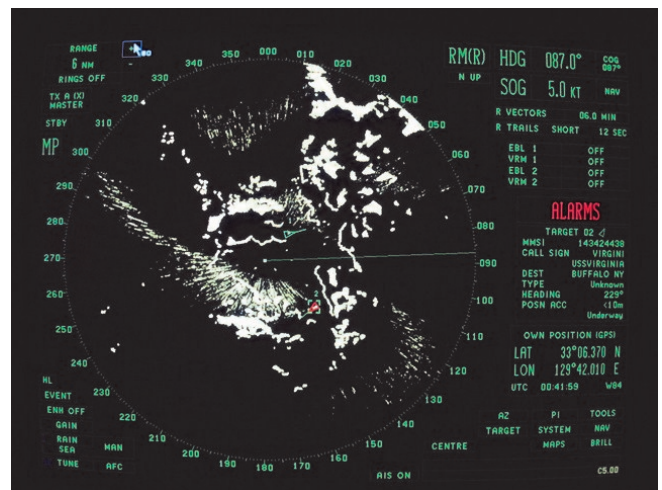
PCS-2xx Specifications:

All simulation parameters are programmable based on customer's needs. These include:

- ◆ PRF: 50-5000Hz
- ◆ Scan Rate: 5—60 RPM
- ◆ Pulse Width: 50-5000 nSec
- ◆ Angular Resolution: 0.17 degrees
- ◆ Beam Width: 0.3-20 degrees
- ◆ Speed Log: 200 pulses / NM
- ◆ Gyro Compass: 30V, 3-phase stepper
- ◆ Video Resolution: 4-64 yards / pixel
- ◆ 100 targets, operationally expandable
- ◆ Exercise Playing Area up to 256NM x 256NM
- ◆ Antenna blanking sectors
- ◆ Set & Drift
- ◆ Yaw
- ◆ RACON and SART generation
- ◆ Dynamic Precipitation Clutter (moves with the wind)
- ◆ Sea Clutter
- ◆ Secondary Radar Effects include:
 - * Range Attenuation (Power)
 - * False Echoes
 - * Multiple Echoes
 - * Radar Interface
 - * Receiver Noise
 - * Beam Width / Pulse Width Effects



The PCS-250 Portable Radar Simulator



PCS-200 driving a Sperry BridgeMaster E

Radar Signal Generator Board



Available Radar Display Interfaces:

- * SPS-73
- * Sperry VisionMaster / BridgeMaster-E
- * Furuno: All Models (Including SPS-50)
- * BPS-15 & 16
- * Kelvin Hughes Manta
- * SPA-25G
- * Raytheon Mk1, MK2, NSC
- * SSR Engineering PCRP
- * Custom Interfaces Upon Request

Contact BCG for information and pricing on our full line of Maritime Simulation products.

4185 Bayview Road ~ Blasdell ~ New York ~ 14219 ~ 716-822-8668 ~ www.bcgeng.com