



What is DisasterLAN™?

DisasterLAN™ is a state-of-the-art web-based crisis information management system designed for use in emergency operations centers (EOCs). Designed by emergency managers, for emergency managers, DisasterLAN™ provides an easy-to-use interface based upon the workflow requirements of the emergency management community. It is used by agencies at state, county and local levels, as well as by private corporations. DisasterLAN™ is fully NIMS-compliant, modular in design, and highly secure. Each module within DisasterLAN™ is aimed at fulfilling a specific need within the EOC. Furthermore, the web-based architecture of DisasterLAN™ allows emergency managers to participate in emergency management activities no matter where they are in the world. The information that follows focuses on DisasterLAN's™ integrated GIS capabilities. Information on other modules can be found at www.disasterlan.com.

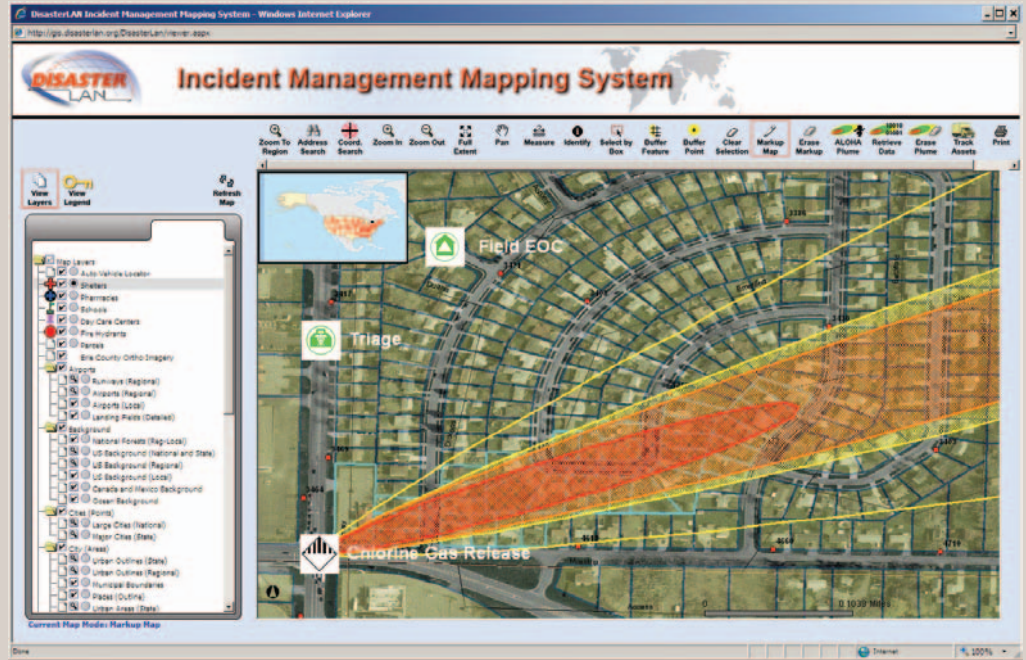
BCG

BUFFALO COMPUTER GRAPHICS

3741 Lake Shore Rd.
Blasdell, NY 14219
716-822-8668 (office)
716-822-2730 (fax)
www.disasterlan.com

www.buffalocomputergraphics.com

DisasterLAN™ GIS



This photo shows an ALOHA plume for a Chlorine gas release overlaid upon ortho imagery. Using the "Retrieve Data" tool, property parcels that intersect with the red plume layer have been highlighted. The map has been further annotated using the DisasterLAN™ "Markup Map" tool.

You have probably heard the saying before, "a picture is worth a thousand words," but nowhere is it more true than in emergency management. Whether you are trying to convey a common operational picture, determine which critical facilities or populations are affected during a crisis, or match resource requests to the closest available assets, GIS mapping has become indispensable to emergency managers. DisasterLAN's™ integrated GIS mapping solution provides emergency managers with a sophisticated set of easy-to-use tools for planning, response, mitigation and recovery activities. And since Buffalo Computer Graphics has integrated GIS into every facet of the DisasterLAN™ crisis management solution, virtually every piece of data entered into DisasterLAN™ can quickly and easily be displayed geospatially on a map. This is possible, in part, because of DisasterLAN's™ automatic address/location geocoding tool.

Through a strategic business partnership with ESRI™, the premier provider of GIS solutions to the emergency management community, Buffalo Computer Graphics has been able to leverage the power of ArcIMS™ and ArcSDE™ technology to provide real-time mapping capabilities to emergency managers. DisasterLAN's™ GIS Module provides users with a true enterprise-level, secure, web-based mapping solution.

With our unique implementation methodology, DisasterLAN™ can simultaneously display data from existing data sets with dynamically changing incident data entered into DisasterLAN™ during a crisis. This means that emergency managers can leverage existing data sources from in-house GIS departments with the incident-specific data entered into DisasterLAN™.

continued...

GIS Fast Facts

- *Enterprise-level GIS based upon ArcIMS and ArcSDE technology*
- *Designed to utilize existing data sources*
- *Display hazard plumes and identify affected populations*
- *Track assets and display remote sensing data*
- *Markup and share maps quickly*

DisasterLAN™ GIS

For agencies that do not have their own GIS data, DisasterLAN™ fully integrates with the ArcWeb™ Services technology provided by ESRI™. This provides robust mapping capabilities, to agencies of any size, at an affordable cost.

With DisasterLAN's™ integrated map viewer, it is easy to visually display incident locations, available and deployed resources, critical facilities, affected populations, toxic gas/radiation plumes, and much more. Maps can also easily be shared with the public or other members of the emergency management team via image export or map printing tools.

While visualizing geospatial information is important, it is also critical to be able to access the data behind the images. With DisasterLAN's™ map viewer, it is easy to perform spatial selections and extract data for selected features. For example, users can easily place an ALOHA plume on the map and then select features contained within the footprint of the plume (e.g., property parcels or critical facilities). Once the affected features are selected, a simple click of the mouse provides the user with a CSV file containing all of the pertinent data for the selected features. Imagine being able to use this data to trigger shelter-in-place or evacuation orders for an affected population via a reverse 9-1-1 system, within just minutes!

Besides using DisasterLAN's™ integrated plume-modeling capabilities, users can also create custom buffers based upon map features (e.g., rivers, roads, etc.) or selected points on the map. Again, besides just displaying the identified features on the map, users can easily export

the data behind the images. With DisasterLAN's™ GIS solution, emergency managers have a powerful decision support tool.

For those agencies with GPS-equipped assets (e.g., Automatic Vehicle Location, GPS-enabled cell phones), DisasterLAN™ can automatically display the current location, speed and direction of travel for each asset. Users can even track/follow a selected asset and view a breadcrumb trail of where a particular asset has been. DisasterLAN's™ map viewer can also display remote asset data such as meteorological conditions, radiation measurements, or other sensor data. Buffalo Computer Graphics offers a complete in-vehicle hardware solution that includes mobile GPS, meteorological and radiological data collection and transmission.

Since DisasterLAN™ was designed to be fully NIMS-compliant, use of the United States National Grid (USNG) coordinate systems is a standard feature. Coordinates can be entered or converted between Degrees Minutes Seconds (DMS), Degrees Minutes (DM), Decimal Degrees (DD) and USNG quickly and easily. Also, emergency managers can use DisasterLAN's™ custom markup tool to add graphics and text to a map on-the-fly; all markups (e.g., EOC location, triage location, staging location, etc.) utilize the standardized symbol set established by the Federal Geographic Data Committee Homeland Security Working Group.

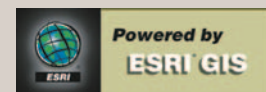
For more information on the many other features included with DisasterLAN's™ GIS solution, or to request a web demo, please contact us at (716) 822-8668.

The screenshot displays the DisasterLAN Incident Management Mapping System interface. The main map shows a geographic area with various icons representing incident locations. A 'Coordinate Locator / Converter' dialog box is open, showing input fields for Latitude (42° 06') and Longitude (78° 15') and a 'Submit' button. A second dialog box shows the output as a USNG coordinate: 17TQH2532202411. A red double-headed arrow indicates the conversion between the two formats.

This map illustrates how data entered into DisasterLAN's™ Call Center can be displayed on a map. Specifically, this map illustrates the location of requests for dust masks, generators, and canine search and rescue teams. By highlighting icons on the map using the "Identify" tool, the complete call center ticket can be accessed.



ESRI
Technology
AUTHORIZED
BUSINESS PARTNER



Trademarks provided under license from ESRI.