

BCG

Buffalo Computer Graphics

Product Overview

The Student Response Unit (SRU) is a teaching aid developed by Buffalo Computer Graphics as part of our Radar Simulator product line. The SRU integrates a series of Question & Answer Sets into a simulated navigation exercise. With the SRU option, the instructor creates a training exercise that includes Questions Sets built into the scenario, such that the student is prompted to answer these questions based upon a specific time or event within the exercise. The student's answers are recorded, then the training exercise continues until the next Question Set is scheduled to occur. There may be up to four different Questions Sets available, each with up to ten questions. The instructor has full control over the content of the Question Sets and when they occur within a training exercise. The SRU provides each student with a workstation that operates as his/her testing terminal when networked to a BCG Instructor GUI optioned with the SRU software.

Prior to training, the instructor creates a training exercise and builds in one or more Question Sets which are recorded within the scenario file. The questions will be played back with the scenario each time it is run. Part of the added functionality may include preliminary Briefing Text which is used to make the student aware the exercise to be run and intended purpose. The student's responses to the questions are stored in a separate file at the Instructor GUI to be later evaluated by the instructor.

Initially, the student is prompted to Log-In using a Login ID, Login Name(s) and a Password. Once the student is logged in and the exercise is started they will see a screen similar to Figure-1. This screen allows them to see the status of the situation and provides the Latitude, Longitude, Speed and Heading read outs. [Optionally the student may control their Ownship's motion by using a Ship Control Unit (SCU), contact BCG for more information]. Once a scenario is started any Briefing Text and Question Sets are sent to the student automatically.

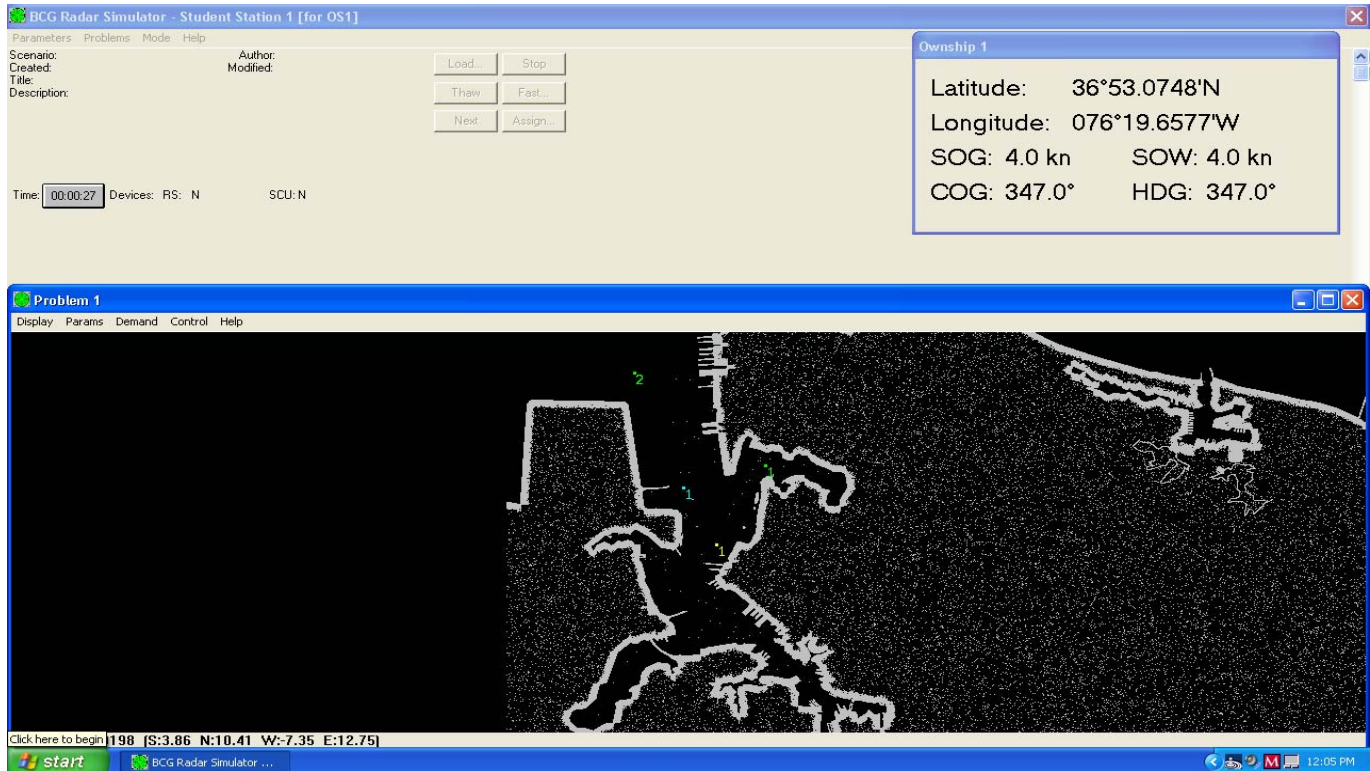


Figure – 1 Student SRU Presentation

Normally the first window seen on the SRU is the Briefing Text Window (Figure-2). This is a free form text window created by the instructor. It is presented to the student at the SRU as a preliminary explanation of the training exercise they are about to run.

The Question Set Window (Figure-3) is used for presenting up to ten questions to the student which are relevant to the current scenario. Each question within the set is expanded by selecting one of the ten large pushbuttons in this window. Each pushbutton has a title indicating the question number. By clicking on the face of one of the questions you can bring up the individual window for that question (Figure-4). The Question window is used for displaying or editing the information for a single question. It is also used by students to answer a single question.

Each question can have one of the following formats:

Question unused, True/False, Yes/No, Multiple Choice A/B, Multiple Choice A/B/C, Multiple Choice A/B/C/D, Input Text, No answer. If the answer format is Unused, then the question will not be available to be answered by students.

For the student, the list-box is labeled "Your Answer", and the student must select an item to choose the answer to the question in the test. It is the only field that the student can change. If a student has not yet selected an answer for a multiple choice question, then a message box will appear and ask the student for a confirmation before exiting the question window.

When the instructor builds the Question Sets he/she may provide for a fixed time to answer. A 'Pause' feature will stop the training exercise for a specified time period allowing the student the opportunity to answer all questions. The scenario will automatically restart at the end of the programmed Pause. At the end of the exercise the student is allowed to go back to all Question Sets (Figure-5) to answer missed questions before submission to the instructor.

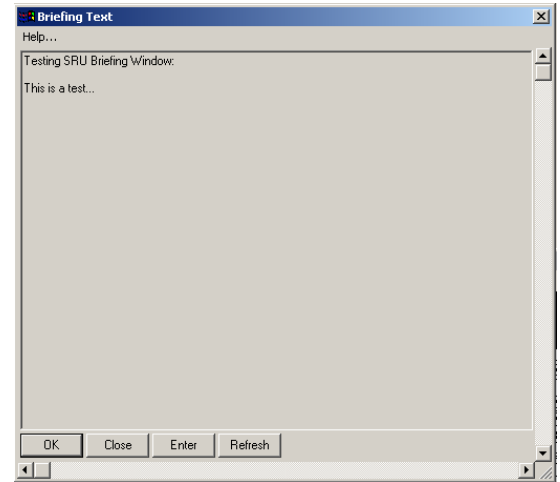


Figure - 2

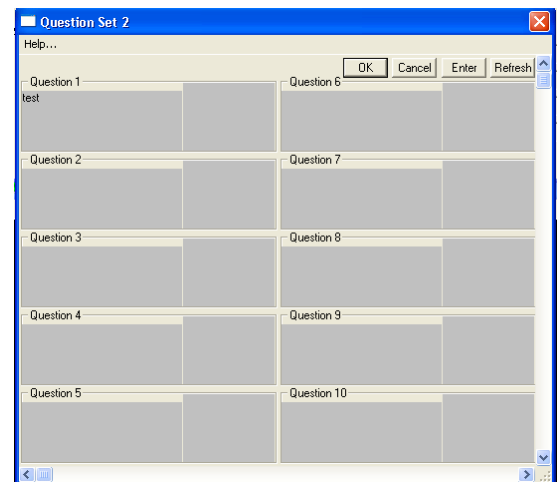


Figure - 3

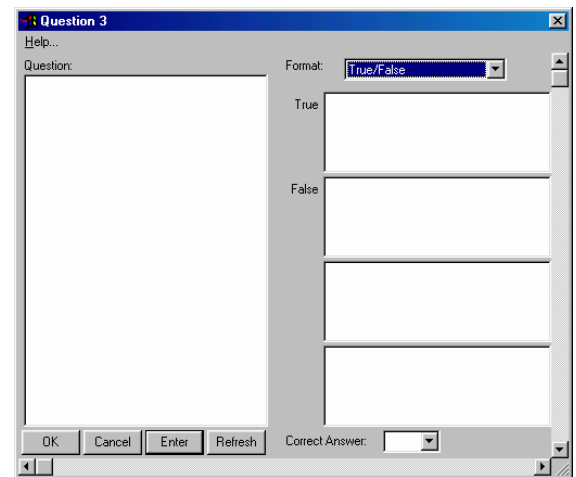


Figure - 4

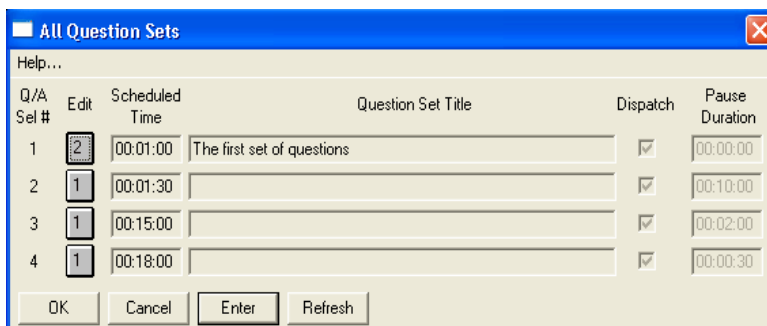


Figure - 5