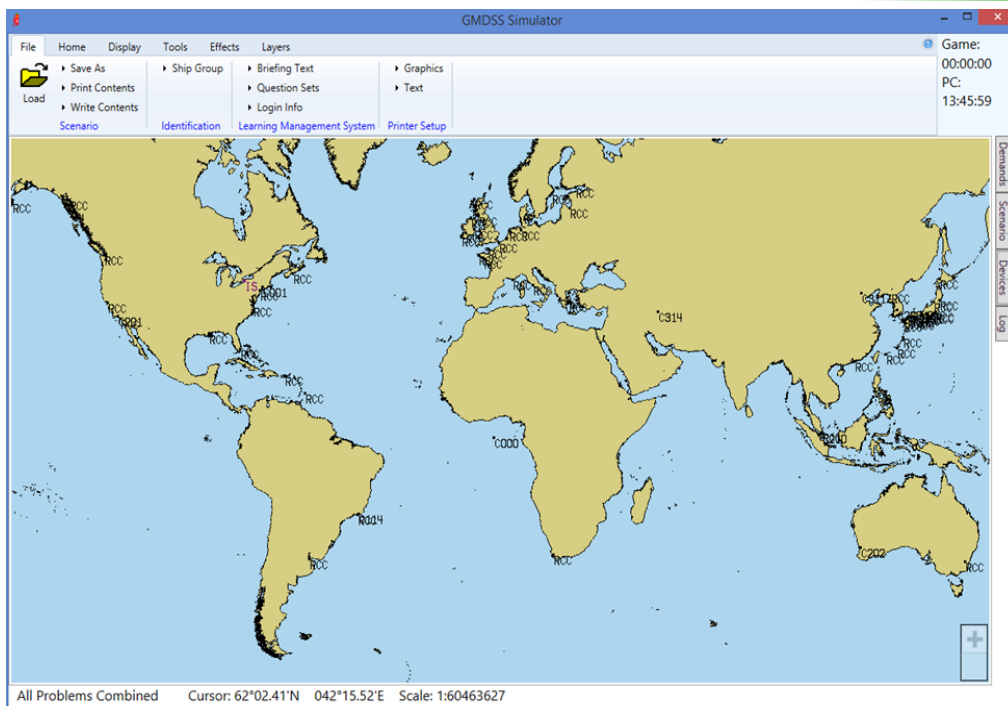


# GMDSS Maritime Simulation Tool (G-MaST)



## Features

- > Control of up to 32 students
- > Students may be in up to 8 separate problems or all in same problem.
- > Up to 20 movable targets for role playing the location of the instructor's radio
- > A single graphics window displays an overview of simulation within all four Sea Areas
- > Zoom, pan & centering tools
- > Save, edit, replay, & review capability for scenarios



Control of Buffalo Computer Graphics' (BCG) GMDSS simulators is through our instructor software called the GMDSS Maritime Simulation Tool (G-MaST). The G-MaST application provides a simple, modern and powerful user interface for exercise creation, dynamic messaging and event logging.

G-MaST utilizes BCG's 20+ years of experience in GMDSS simulation to provide the operator with an easy to use yet extremely thorough interface for controlling a training scenario. Audio and digital message links allow the instructor to monitor communications and role play as a vessel within the scenario, a coast radio/earth station, or rescue coordination center. Exercise locations and GMDSS stations are selectable from a worldwide GMDSS database. Automated maritime safety information broadcasts can be preprogrammed or instructor initiated.

Each student station operates as its own ship during the exercise and is completely independent from other vessels. This capability allows for team training.

The software can be used with Windows 7, 10, or 11. All stations operate on a LAN making expansion simple and allows for system growth as your training requirements increase.

## Available Options:

- ◆ Slave operation for external control of GMDSS system
- ◆ Learning Management System (LMS)
- ◆ Link with BCG radar simulator for coordinated SART activation

## G-MaST Window Features:

- \* Ownship speed, heading, location
- \* Target speed, heading, location, and other parameters for up to 20 target ships that may be associated with the instructor's radio dynamically.
- \* Ship identification assignment for each student ownship (call sign, MMSI, Telex, Inmarsat, Fleet Broadband Mobile with Texting).
- \* Audio and text messages that may be either sent immediately or scheduled at specified scenario times.
- \* Instant Demand Panel that pops up to show critical student information.
- \* Display layers in the global map for satellites, NAVAREA boundaries and various types of land-based stations (RCC, Navtex, CES, DSC, Selcall).
- \* Unlimited number of scenarios

### Demand Pop-up

Instant Demand  
 Ownship: OS1  
 Speed: 5.0 kn  
 Heading: 0.0°  
 Course: 0.0°  
 Lat: 36°57.8990'N  
 Lon: 076°22.4505'W  
 Sea: 000°/0.0/0  
 Wind: 000°/0.0  
 Problems: 1  
 Name: Nantucket  
 MMSI: 11778330  
 Battery: 0%  
 MF/HF RX Freq: 0.000  
 MF/HF RX Mode: USB  
 MF/HF TX Freq: 0.000  
 MF/HF TX Mode: USB  
 MF/HF TX Power: 0.000  
 MF/HF DSC RX  
 MF/HF DSC TX  
 MF/HF DSC M  
 VHF Chan:  
 VHF Power:  
 VHF Squelch: ( )  
 Fleet77 Power: OFF

### Ownship Window

New Ownship 1

Current Heading: 000.00  
 Last Cmd Hdg: 000.00  
 Heading Mode:  
 Immediate  
 Commanded  
 Port  
 Starboard

Ahead: 99.0 kn.  
 Current Speed: 0.0  
 Last Cmd Speed: 0.0  
 Speed Mode:  
 Immediate  
 Commanded  
 Astern: 5.0 kn.

Control:  
 Instructor  
 Class:  
 Default  
 Latitude  
 29.28.5873,N  
 Longitude  
 052.29.2163,W  
 Problem:  
 1  
 SART

Waypoints Graph Heading  
 Apply Cancel

### Event Log Window

G-MaST Message Log

Time	Devices
0:1234	
0:1234	

INMARSAT-C Navtex Schedule Location Lat/Lon Format  
 MF/HF DSC MF/HF DSC VHF DSC  
 Radio Telex Fleet SMS  
 Send Immediate Settings Instructor Radio Units

Delivery: All MF/HF Audio: Yes MF/HF DSC: Yes  
 Area: All Radio Telex: Yes VHF DSC: Yes  
 SART: Yes EPIRB: Yes Navtex: Yes

### Home Ribbon

Table New by Move Edit All  
 Ship Class Ownship

New by Move Edit All  
 Target

Play Stop  
 Control

Base Time 00:00:00 Time 00:00 Go  
 Acceleration 1.0 @Time Play After  
 Fast Time

Zoom In Zoom Out Pan Zoom Box  
 View

### Tools Ribbon

INMARSAT-C Navtex Schedule Location Lat/Lon Format  
 MF/HF DSC VHF DSC Power Failure  
 Radio Telex Fleet SMS  
 Send Immediate Settings Instructor Radio Units

### Scheduled Message Menu

- New INMARSAT-C Message
- New MF/HF Audio Message
- New MF/HF DSC Message
- New Radio Telex Message
- New Navtex Message
- New VHF DSC Message
- New Power Failure
- New Fleet SMS Message

### Layers Ribbon

Show Coastlines  Satellite Locations  Navtex Stations  Rescue Coordination Centers  
 NAVAREA Boundaries  Satellite Coverage  Coast Earth Stations  SelCall Stations  
 NAVAREA Numbers  DSC Coast Stations  CS to Associated RCC  
 World Land Stations

Contact BCG for information and pricing on our full line of Maritime Simulation products.