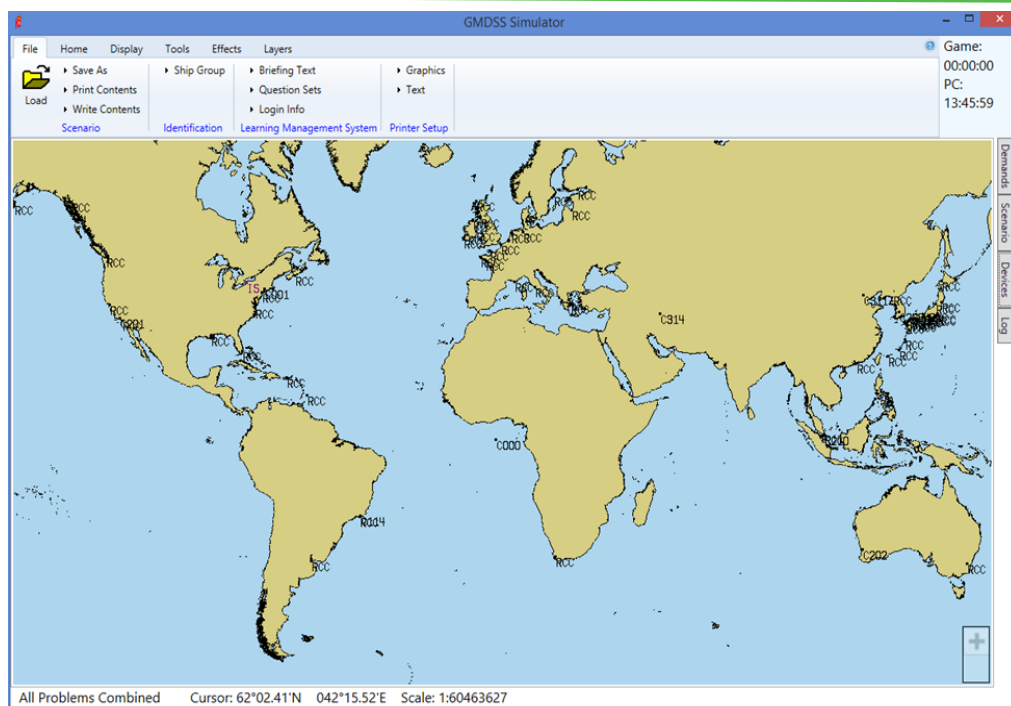


GMDSS Maritime Simulation Tool (G-MaST)



Features

- > Control of up to 32 students
- > Students may be in up to 8 separate problems or all in same problem.
- > Up to 20 movable targets for role playing the location of the instructor's radio
- > A single graphics window displays an overview of simulation within all four Sea Areas
- > Zoom, pan & centering tools
- > Save, edit, replay, & review capability for scenarios



Control of Buffalo Computer Graphics' (BCG) GMDSS simulators is through our instructor software called the GMDSS Maritime Simulation Tool (G-MaST). The G-MaST application provides a simple, modern and powerful user interface for exercise creation, dynamic messaging and event logging.

G-MaST utilizes BCG's 20+ years of experience in GMDSS simulation to provide the operator with an easy to use yet extremely thorough interface for controlling a training scenario. Audio and digital message links allow the instructor to monitor communications and role play as a vessel within the scenario, a coast radio/earth station, or rescue coordination center. Exercise locations and GMDSS stations are selectable from a worldwide GMDSS database. Automated maritime safety information broadcasts can be preprogrammed or instructor initiated.

Each student station operates as its own ship during the exercise and is completely independent from other vessels. This capability allows for team training.

The software can be used with Windows 7, 8, or 10. All stations operate on a LAN making expansion simple and allows for system growth as your training requirements increase.

Available Options:

- ◆ Slave operation for external control of GMDSS system
- ◆ Learning Management System (LMS)
- ◆ Link with BCG radar simulator for coordinated SART activation

Demand Pop-up

Instant Demand
Ownship: OS1
Speed: 5.0 kn
Heading: 0.0°
Course: 0.0°
Lat: 36°57.8990'N
Lon: 076°22.4505'W
Sea: 000°/0.0/0
Wind: 000°/0.0
Problems: 1
Name: Nantucket
MMSI: 11778330
Battery: 0%
MF/HF RX Freq: 0.000
MF/HF RX Mode: USB
MF/HF TX Freq: 0.000
MF/HF TX Mode: USB
MF/HF TX Power: 0.000
MF/HF DSC RX Freq: 0.000
MF/HF DSC TX Freq: 0.000
MF/HF DSC Mode: 0
VHF Chan:
VHF Power:
VHF Squelch: 0
Fleet77 Power: OFF

Ownship Window

New Ownship 1

Current Heading: 000.00
Last Cmd Hdg: 000.00
Heading Mode:
☒ Immediate
☐ Commanded
☐ Port
☐ Starboard

Ahead: 99.0 kn.
Current Speed: 0.0
Last Cmd Speed: 0.0
Speed Mode:
☒ Immediate
☐ Commanded
Astern: 5.0 kn.

Control:
Instructor
Class: Default
Latitude: 29.28.5873,N
Longitude: 052.29.2163,W
Problem: 1
☐ SART

Waypoints Graph Heading
Apply Cancel

G-MaST Window Features:

- * Ownship speed, heading, location
- * Target speed, heading, location, and other parameters for up to 20 target ships that may be associated with the instructor's radio dynamically.
- * Ship identification assignment for each student ownship (call sign, MMSI, Telex, Inmarsat, Fleet77 Mobile, Email).
- * Audio and text messages that may be either sent immediately or scheduled at specified scenario times.
- * Instant Demand Panel that pops up to show critical student information.
- * Display layers in the global map for satellites, NAVAREA boundaries and various types of land-based stations (RCC, Navtex, CES, DSC, Selcall).
- * Unlimited number of scenarios

Event Log Window

G-MaST Message Log

Log#	Type	Time	From	To	Contents	Delivered	Ownships	Devices
1	INMARSAT-C	11:00:00	Instruct	All Stud	***EGC*** 15117 2	Received by A	Active:1234	
2	RADIOTELEX FEC	11:00:00	Instruct	All Stud	Hello	Not received	Active:1234	

Log Display Filter

Stations: All Email: Yes
Times: All INMARSAT-C: Yes
Delivery: All MF/HF Audio: Yes MF/HF DSC: Yes
Area: All Radio Telex: Yes VHF DSC: Yes
SART: Yes EPIRB: Yes Navtex: Yes

Home Ribbon

Table New by ▾ Move Edit All
Ship Class Ownship Target Control Fast Time View

New by ▾ Move Edit All
New

Play Stop
Base Time 00:00:00
Acceleration 1.0

Time 00:00 Go
@Time
Play After

Zoom In Zoom Out
Pan Zoom Box

Tools Ribbon

INMARSAT-C Navtex
MF/HF DSC VHF DSC
Radio Telex Email
Send Immediate

Schedule
Power Failure
Reset Defaults
Settings

Location
Override
IOS Comms
Instructor Radio

Lat/Lon Format ▾
Units

Layers Ribbon

☒ Show Coastlines ☐ Satellite Locations ☐ Navtex Stations ☒ Rescue Coordination Centers
☐ NAVAREA Boundaries ☐ Satellite Coverage ▾ ☒ Coast Earth Stations ☐ SelCall Stations
☐ NAVAREA Numbers ☐ DSC Coast Stations ☐ CS to Associated RCC

World Land Stations

Scheduled Message Menu

New INMARSAT-C Message
New MF/HF Audio Message
New MF/HF DSC Message
New Radio Telex Message
New Navtex Message
New VHF DSC Message
New Power Failure
New Email Message

Contact BCG for information and pricing on our full line of Maritime Simulation products.

4185 Bayview Road ~ Blasdel ~ New York ~ 14219 ~ 716-822-8668 ~ www.bcgeng.com