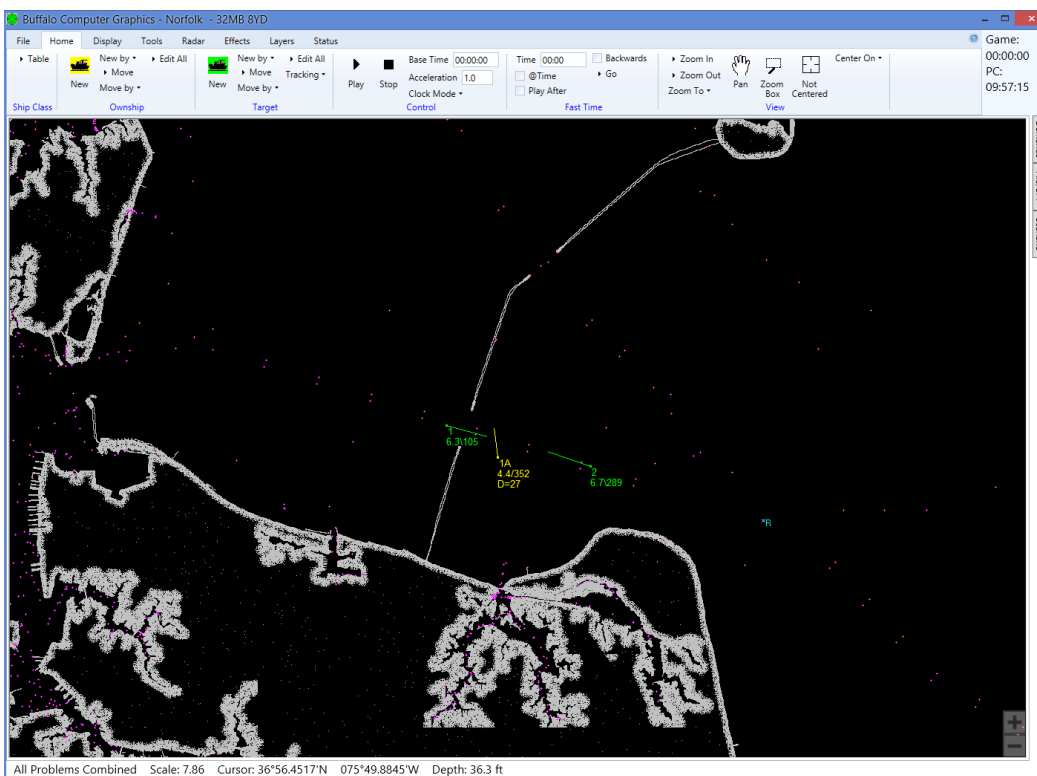


# Maritime Simulation Tool (MaST)



## Features

- > Control of up to 32 ownships
- > Controls up to 1,000 targets
- > Programmable dynamics and dimensions of all vessels
- > A single graphics window displays an overview of exercise area
- > Simple controls for vessel movement
- > Zoom, pan & centering tools
- > Save, edit, replay, & review capability for scenarios

Control of Buffalo Computer Graphics' (BCG) radar simulators is through our instructor software called the Maritime Simulation Tool (MaST). The MaST application provides full control over all elements of the training exercise utilizing a simple, modern and powerful user interface.

The MaST utilizes BCG's 30+ years of experience in maritime simulation to provide the operator with an easy to use yet extremely thorough interface for controlling a training scenario. The MaST can control up to 32 Ownships and 1,000 moving or stationary targets in up to 8 separate problems. In addition to controlling the ownships and targets, the software allows control of environmental conditions, radar parameters, vessel handling characteristics, scenario timeline, and geographic location for all entities.

The MaST is available as a software-only package to be installed on a customer's computer, or as a turnkey work station with the software installed and tested on a Windows computer. MaST will run under Windows 7, 8, or 10.

MaST may also be configured to function as a slave to a third party simulation system, allowing an existing system to control BCG radar products through either a proprietary network interface, HLA, or DIS packets.

4185 Bayview Road ~ Blasdell ~ New York ~ 14219 ~ 716-822-8668 ~ [www.bcgeng.com](http://www.bcgeng.com)

## Available Options:

- ◆ Encrypted AIS (EAIS) support
- ◆ Simulated VHF radio and controls
- ◆ Slave operation for external control of radar system
- ◆ Learning Management System (LMS)

## MaST Features:

The MaST allows the operator to control or modify the following elements in any given scenario:

- \* Ownship speed, heading, location, and radar parameters
- \* Target speed, heading, location, and other parameters for up to 1,000 target ships
- \* Vessel characteristics including: dimensions, rudder response time, acceleration and deceleration rates, maximum turn rate, and other handling parameters.
- \* Unlimited number of scenarios
- \* Environmental conditions including: wind direction and speed, sea state, precipitation level and intensity, and set and drift.
- \* Built-in Automatic Identification System (AIS) capability
- \* NMEA-0183 sensor data generation
- \* Dual VRMs and EBLs
- \* Five customizable Demand Windows including details such as CPA/TCPA, Position, Range/Bearing, and Bow Crossing Range/Time for any active ownships or target
- \* Instant Demand Panel to quickly see critical vessel information
- \* Simulation of equipment failures or induced errors

## Ownship Window

**Edit Ownship 1**

Current Heading: 352.35  
 Current Mag Hdg: 352.35  
 Last Cmd Hdg: 352.35

Heading Mode:  
 Immediate  
 Commanded  
 Port  
 Starboard

Ahead: 33.0 kn.  
 Current Speed: 4.4  
 Last Cmd Speed: 4.4  
 Speed Mode:  
 Immediate  
 Commanded  
 Astern: 5.0 kn.

Control:  
 Instructor  
 Class: WPB110  
 Latitude: 36.576963,N  
 Longitude: 076.055978,W  
 Designation:  
 Problems: 1

% Load: 0  SART

Waypoints	Sector Blanking	Yaw/Pitch/Roll
Proximity Alarm	Radar Effects	Sensor Settings
AIS	Speed Settings	Heading Settings
Graph Heading	Graph Speed	

Apply Cancel

## Instant Demand Pop-up

**Instant Demand Track: T1**

Speed: 2.4 kn  
 Heading: 19.0°  
 Course: 19.0°  
 Lat: 36°52.751'N  
 Lon: 076°20.181'W  
 Range: 0.9216 NM  
 Bearing: 342.8°  
 AIS Name/MMSI:  
 USSAMERICA  
 143424444  
 Sea: 000°/0.0/0  
 Wind: 000°/0.0  
 Class: Patrol Boat

## Home Ribbon

File Home Display Tools Radar Effects Layers Status

Table New by Edit All New by Edit All  
 Ship Class Ownship Target

Pause Stop Base Time 00:00:00 Time 00:00 Backwards  
 Acceleration 1.0 @Time Go  
 Clock Mode Play After Fast Time

Zoom In Zoom Out Zoom To Pan Zoom Box Not Centered  
 View

## Display Ribbon

File Home Display Tools Radar Effects Layers Status

IDs  AIS Names  Show  Show  
 Spd/Hdg Font Size 16  Large Points Vector Mode  
 Depth Time Period 3:00 Length 10:00  
 Markers Trails Vectors

Reset View  Ship Outlines Orientation Show  
 Refresh View Lat/Lon lines  
 Shipping Lanes Waypoints  
 Map Graphics Problem

Contact BCG for information and pricing on our full line of Maritime Simulation products.

4185 Bayview Road ~ Blasdell ~ New York ~ 14219 ~ 716-822-8668 ~ [www.bcgeng.com](http://www.bcgeng.com)