

# PC21x7

## FAR 21x7 Emulator



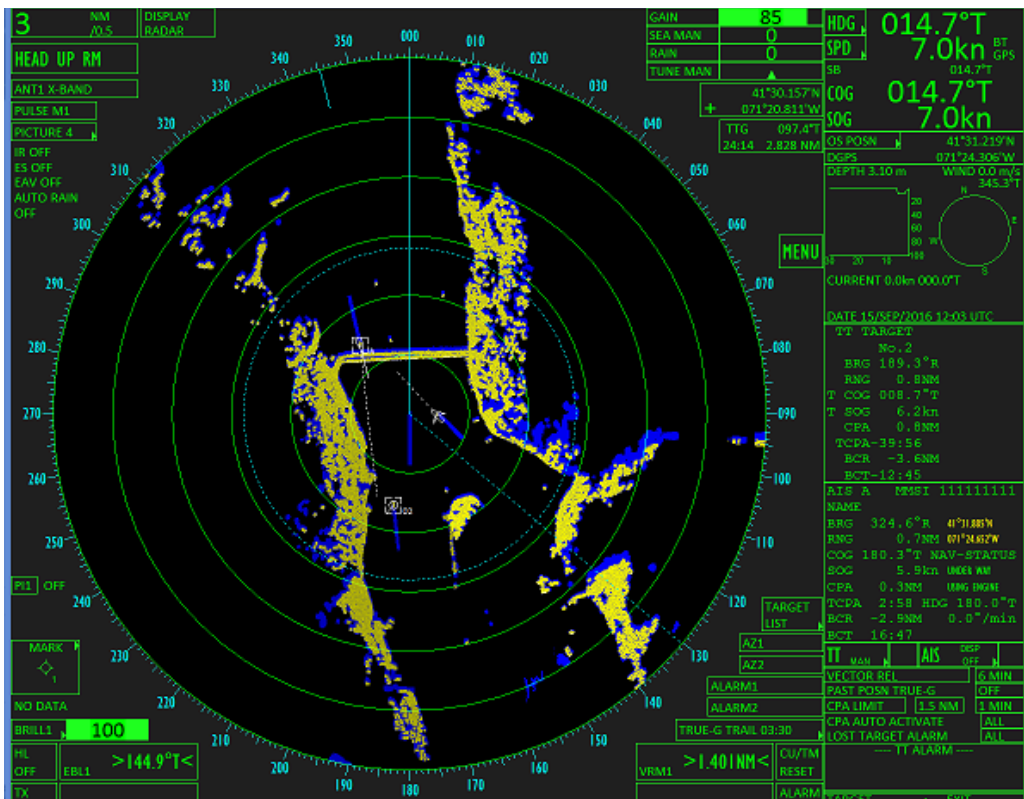
Buffalo Computer Graphics' newest radar emulation is PC21X7, based off of Furuno's FAR21x7 radar, or the SPS-50 for US Government customers. PC21X7 joins a growing list of radar emulations that are offered by BCG and is compliant with international training standards for radar/ARPA training. The PC21x7 user interface models the real FAR21x7 radar currently used by both military and commercial vessels as a surface search radar.

The operational features of the emulation include radar video controls, dual EBL & VRM, multiple presentation modes, graphics capabilities and range scaling. Our 3D radar imagery incorporates realistic simulation of landmass, moving targets, precipitation returns, sea clutter, and other effects seen on a real radar display. For ARPA support, PC21X7 provides target acquisition & tracking, leading vectors & history trails, trial maneuvers, and navigation marks.

PC21x7 was developed using BCG's standard radar simulation engine, is compatible with our Maritime Simulation Tool (MaST), and can be controlled by another simulation engine through a simple network interface. PC21x7 is available in a software only package ready for installation on a customer's PC, or BCG also offers "turn key" systems packaged in multiple configurations depending on your needs.

### Features

- > Windows-based radar emulation software
- > Simulates user interface of the Furuno FAR21x7 (SPS-50) Radar
- > Target Track Message Output for ECDIS integration
- > User Interface operates from Trackball or Mouse or real Control Panel
- > Target Tracking features including acquisition zones and guard zones
- > Supports AIS Features



## PC21x7 SCREEN IMAGES

```

TT TARGET
  No.7   No.8
  BRG 305.5°R 325.4°R
  RNG 1.1NM 1.7NM
T COG 002.4°T 003.0°T
T SOG 0.0kn 0.0kn
CPA 0.9NM 1.0NM
TCPA 5:28 12:17
BCR *.NM *.NM
BCT **:* **:*

AIS B MMSI 111111113
NAME
BRG 222.3°R 41°34.135'N
RNG 3.0NM 071°26.097'W
COG 332.5°T NAV-STATUS
SOG 5.0kn UNDER WAY
CPA 3.0NM USING ENGINE
TCPA-38:22 HDG 332.5°T
BCR -8.9NM 0.0°/min
BCT -37:37

TT TARGET
  No.2   No.6
  BRG 205.3°R 207.0°R
  RNG 1.3NM 1.4NM
T COG 009.3°T 359.5°T
T SOG 6.3kn 0.0kn
CPA 1.3NM 1.4NM
TCPA-82:08 -10:28
BCR -13.8NM *.NM
BCT-57:09 **:*
    
```

Target Information Panel

```

[PICTURE MENU]
1 INT REJECT
  OFF/1/2/3
2 ECHO STRETCH
  OFF/1/2/3
3 ECHO AVERAGE
  OFF/1/2/3
4 NOISE REJ
  OFF/ON
5 AUTO STC
  OFF/ON
6 AUTO RAIN
  OFF/1/2/3/4/
7 VIDEO CONTRAST
  OFF/1/2/3/4/
  A/B/C
8 [PULSE]
9 [CONDITION]
0 DEFAULT
  NO/SAVE/USER/
  FACTORY
    
```

Example of Menu Panel

## Actual Radar Attributes:

The PC21x7 supports the primary operating features and modes of the real radar display. These include:

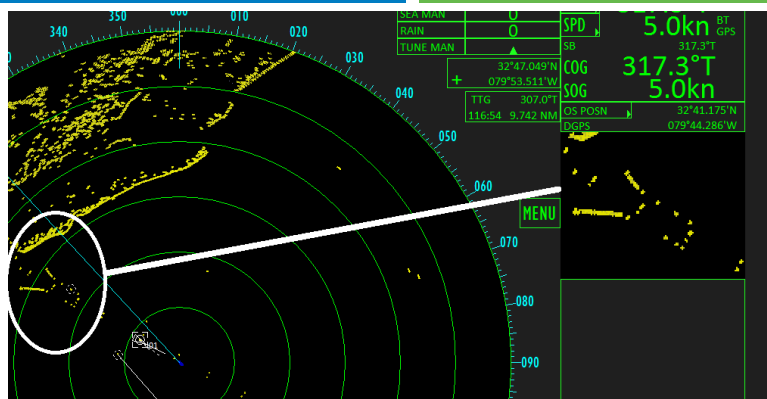
- ◆ STC, FTC, and Gain Control
- ◆ Heads Up, Course Up, North Up Displays
- ◆ Two Variable Range Markers (VRMs)
- ◆ Two Electronic Bearing Lines (EBLs)
- ◆ Target Acquisition and Tracking
- ◆ Auto Acquisition and Guard Zones
- ◆ Ownship and Target Data Windows
- ◆ Radar Image Offset
- ◆ System Alerts
- ◆ Track Histories
- ◆ True or Relative Vectors
- ◆ Navigation Marks
- ◆ Trial Maneuvers (Static or Dynamic)

## Specific PC21x7 Features:

- ◆ Panel display of information for up to 6 tracks and/or 3 AIS targets
- ◆ Parallel Index Lines
- ◆ Programmable Color Modes
- ◆ Zoom Function to magnify a section of radar display
- ◆ AIS Navigation Symbols for ATON, SAR units, or Base Stations
- ◆ Menu Panel access for display control
- ◆ Optional Control Panel hardware available

## PC Requirements:

- ◆ Windows XP, WIN7, WIN8 or WIN10
- ◆ Multi-core processor, >2GHz
- ◆ 2GB memory
- ◆ 500MB disk
- ◆ 100/1000 NIC
- ◆ USB for Trackball or Mouse



Zoom Display Panel highlights the circled area

BCG also offers PC-based radar emulations for several other radars. All of our emulators provide the same level of radar fidelity as the PC21x7, as well as the full ARPA and AIS capabilities.

Contact BCG for information and pricing on our full line of Maritime Simulation products.