

PC25G AN/SPA-25G Emulator



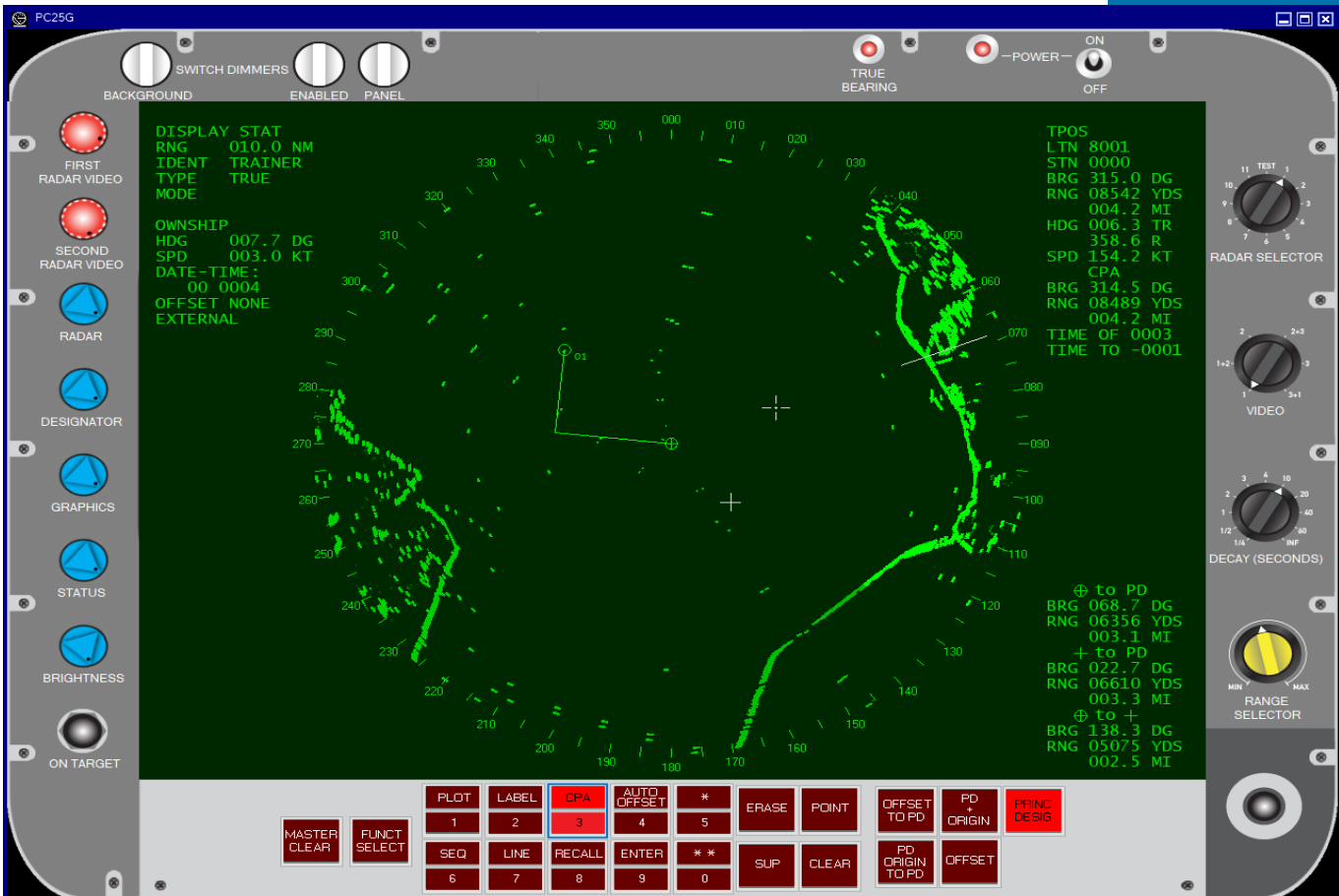
Features

- > Windows-based radar emulation software
- > Simulates user interface of the AN/SPA-25G radar
- > User interface operates from trackball
- > Supports control panel button operations and menus
- > Numeric displays for plotted computed motion and CPA
- > Brightness controls

The PC25G Radar Display Emulator models the AN/SPA-25G Radar Display and is a product in the Buffalo Computer Graphics' (BCG) family of successful PC-based radar simulators. PC25G is a powerful, low-cost training tool to familiarize a student with the use of a real radar for ship navigation.

The 3D radar imagery incorporates realistic simulation of landmass, moving targets, precipitation returns, sea clutter, and other effects seen on a real radar display. The radar operational features include radar video controls, true or relative bearing presentation modes, plot point and linear graphics, and range scaling.

The PC25G user interface models the real AN/SPA-25G used onboard military vessels as a surface search radar. PC25G was developed using BCG's industry standard radar simulation engine, is compatible with our Maritime Simulation Tool (MaST), and can be controlled through a simple network interface. PC25G is available as software only ready for installation on a customer's PC, or as a "turn key" radar display packaged in multiple configurations including a rack mounted chassis, a desktop PC, a laptop PC, and even a deck stand console for more of a shipboard presentation.



PC25G RADAR MENUS

```
ENTER
1 DATE/TIME
2 C/S EXT
3 C/S INT
4 C/S EXT+S/D
5 C/S DRV
6 BL LENGTH
7
8
9 MAG COR
0 EXIT
```

ENTER Menu

```
LABEL
1 AIR OFF
2 SUR OFF
3 SUB OFF
4 FNLY OFF
5 HOST OFF
6 HOME OFF
7 CAP OFF
8 ENT LTN
9 ENT STN
0 EXIT
```

LABEL Menu

```
POINT
1 SELECT ERASE
2 MOVE
3 COAST EXT
4 COAST INT
5 GEO
6
7 LINE OF BEARING
8
9
0 EXIT
```

POINT Menu

```
SUPPRESS
1 PLT PTS ON
2 LABELS ON
3 HIST PTS ON
4 OWN SYM ON
5 RNG RIG OFF
6 CPA LN ON
7 LINES ON
8 VIDEO ERASE
9 GRAPHICS ON
0 EXIT
```

SUPRESS Menu

Actual Radar Attributes:

The PC25G supports the primary operating features and modes of the real radar display. These include:

- ◆ Radar gain control
- ◆ Brightness controls for graphics
- ◆ True or Relative Bearing presentation modes
- ◆ Plot point graphics with automatic computation of plotted speed/heading and CPA with shown history points
- ◆ Graphic symbols for plots indicating tactical significance.
- ◆ Linear graphic drawing, and Line of Bearing (EBL)
- ◆ Geographic or non-geographic status for plot point or linear graphics
- ◆ Radar image offset, either manual or auto (true motion)
- ◆ Magnetic correction entry
- ◆ Control of cursor (Principal Designator) and origin markers using PC trackball
- ◆ Radar decay time control
- ◆ Realistic backlit control panel buttons

PC Requirements:

- ◆ Windows WIN7, WIN10, WIN11
- ◆ Multi-core processor, >2.5GHz
- ◆ 8GB memory
- ◆ 500MB available disk space
- ◆ 100/1000 NIC network
- ◆ USB for Trackball or Touch Screen Monitor

BCG also offers PC-based radar simulation of the Furuno RDP-149 (PCRDP), FAR 21x7 (PC21x7) and FAR 22x8 (PC22x8), the Raytheon SPS-73 (PCRadAr), and the Northrup Grumman BridgeMaster (PCBME) and VisionMaster (PCVM) displays. These six emulators provide the same level of radar fidelity as the PC25G, as well as the full ARPA capabilities found with those radars.