



Wildfire Preparedness

Enhance Wildfire Preparedness, Prevention, Response, and Recovery

Wildfire season is getting longer, more destructive, and expensive every year. As urban areas fill up traditionally forested or woodland areas, the woodland-urban interface (WUI) increases. Wildfires also cause secondary hazards, leaving areas prone to floods, erosion, and mud flows.

Preparing for Increased Fire Activity and Risk to Lives and Property

BCG's DisasterLAN (DLAN) Incident Management System (IMS) helps lower these threats through preparedness, response, recovery and mitigation tools. DLAN can help increase wildfire preparedness with tools for identifying at-risk communities, properties, and ecosystems; pre-built templates and pre-planning tools for response tasks, resources, and deployment teams, and full-scale scenario-based exercises with real-time injects.

Simplified Response & Investigation

Pre-built forms for fire management can be used as is or further customized for your agency. These forms can include text, images, videos, and geo-tagged information depending on your agency's needs. DLAN forms can also be assigned to specific users or groups and are available directly from their mobile devices, helping you maintain efficiency when you need it most. Once the form data is collected, it can be sent back into the main DLAN system and used in tickets, dashboards, or maps further streamlining the fire Investigation/Response process.



Offline Functionality

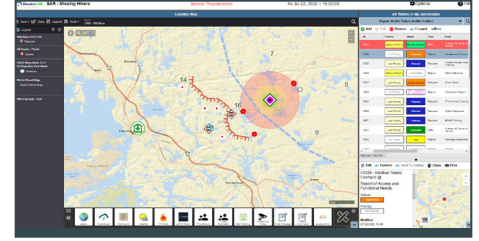
Fires don't always occur in areas with great connectivity. Designed for use in disaster areas without Internet connection, collected data is stored on the device for transmission once Internet connectivity is reestablished.



Premium IMS Tools for Every Phase of Wildfire Management.

GIS Mapping

Our award winning GIS mapping module provides a tremendous array of features to leverage such as: drawing and mark up tools, import and manage data overlay layers, library with wildfire-specific icons, plus the ability to add/edit tickets from the map. Additionally, you can manage assets directly from the map, and see status updates, last-known position and tracking in real-time through integration with the mobile app.



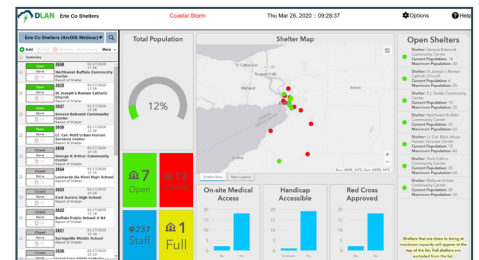
Data Visualization & Streaming Video

Allows the different responding agencies to view and understand their shared situational awareness. Drone feeds for detection, surveillance, and situational orientation can be viewed in drag and drop dashboards, along with video feeds from command posts and field units. Data visualization is critical to identifying and analyzing evacuation routes, hazards to responding units, and at-risk populations and infrastructure.



Documentation and Resource Management

Incident Action Plans and Situation Reports are hugely important to both prevent future wildfires and to protect against secondary hazards, such as floods, erosion, and mudflows that result from wildfires. DLAN's mitigation tools include support for identifying the need for geocoding locations of and reporting on prescribed burns, thinning, and replanting to help restore the ecosystem after a wildfire. Inventory and resource requests can utilize a 213RR form or customized reports and dashboards. This easily accessible data will help you make the most informed choices possible.



Community Lifelines

Fires impact so many different aspects of a community's critical infrastructure: knowing the impacts to the all the key pieces that are needed to get public services back up and running directly affect how fast you recover. During the recovery phase, the DLAN System can be used to perform damage assessments, inspections of key infrastructure, safely restore power and other utilities, and general cleanup activities helping you to maintain organization and efficiency.



Start Preparing Your Organization Today
Call 716-822-8668 or Email DLANSupport@bcgeng.com



500™

Technology **Fast 500**
2019 NORTH AMERICA
Deloitte.

govCIO TOP 10
OUTLOOK EMERGENCY
SOLUTIONS PROVIDERS - 2023

